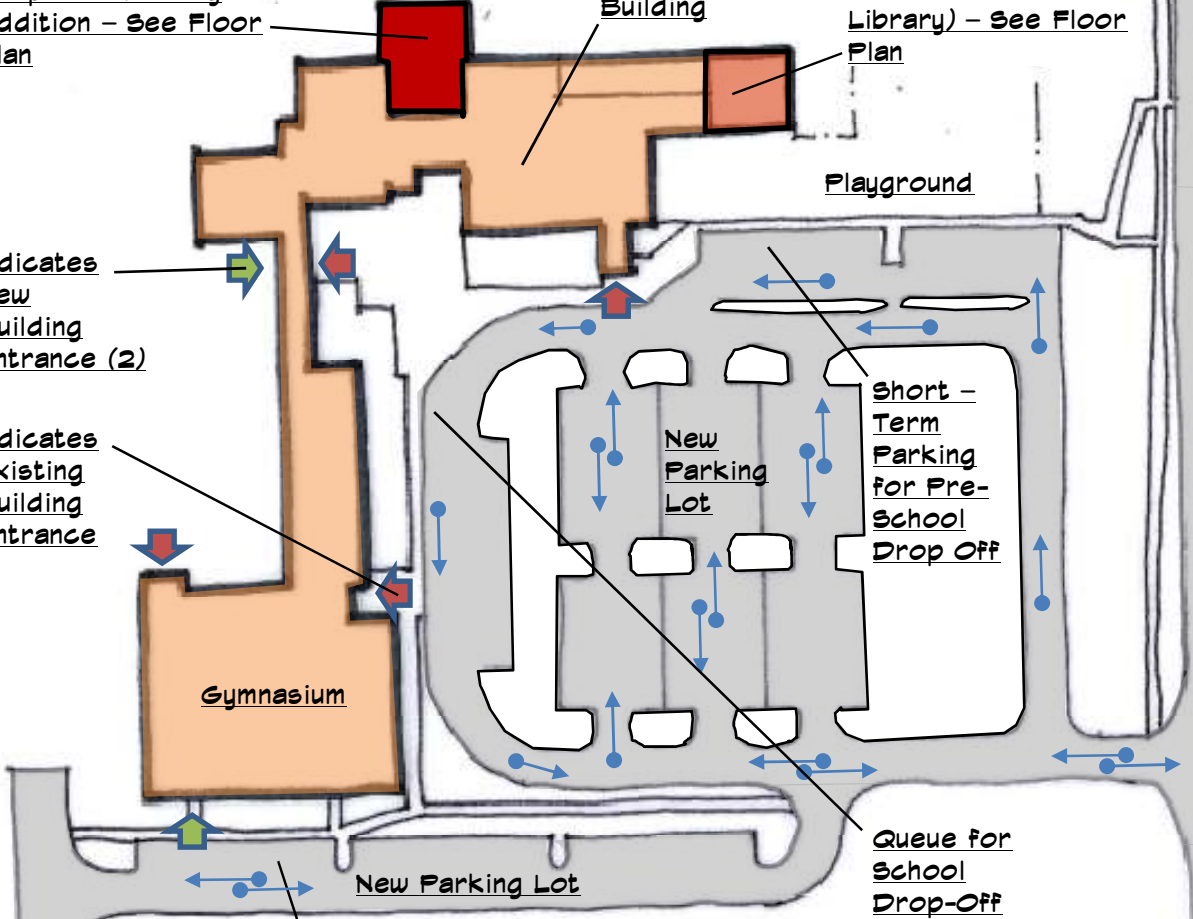


Proposed Library Addition - See Floor Plan
Existing School Building
Proposed Preschool Classroom (Former Library) - See Floor Plan

Indicates New Building Entrance (2)

Indicates Existing Building Entrance



Gymnasium

New Parking Lot

Mandated EV Chargers

Existing Soccer Fields to Remain

Short - Term Parking for Pre-School Drop Off

Queue for School Drop-Off

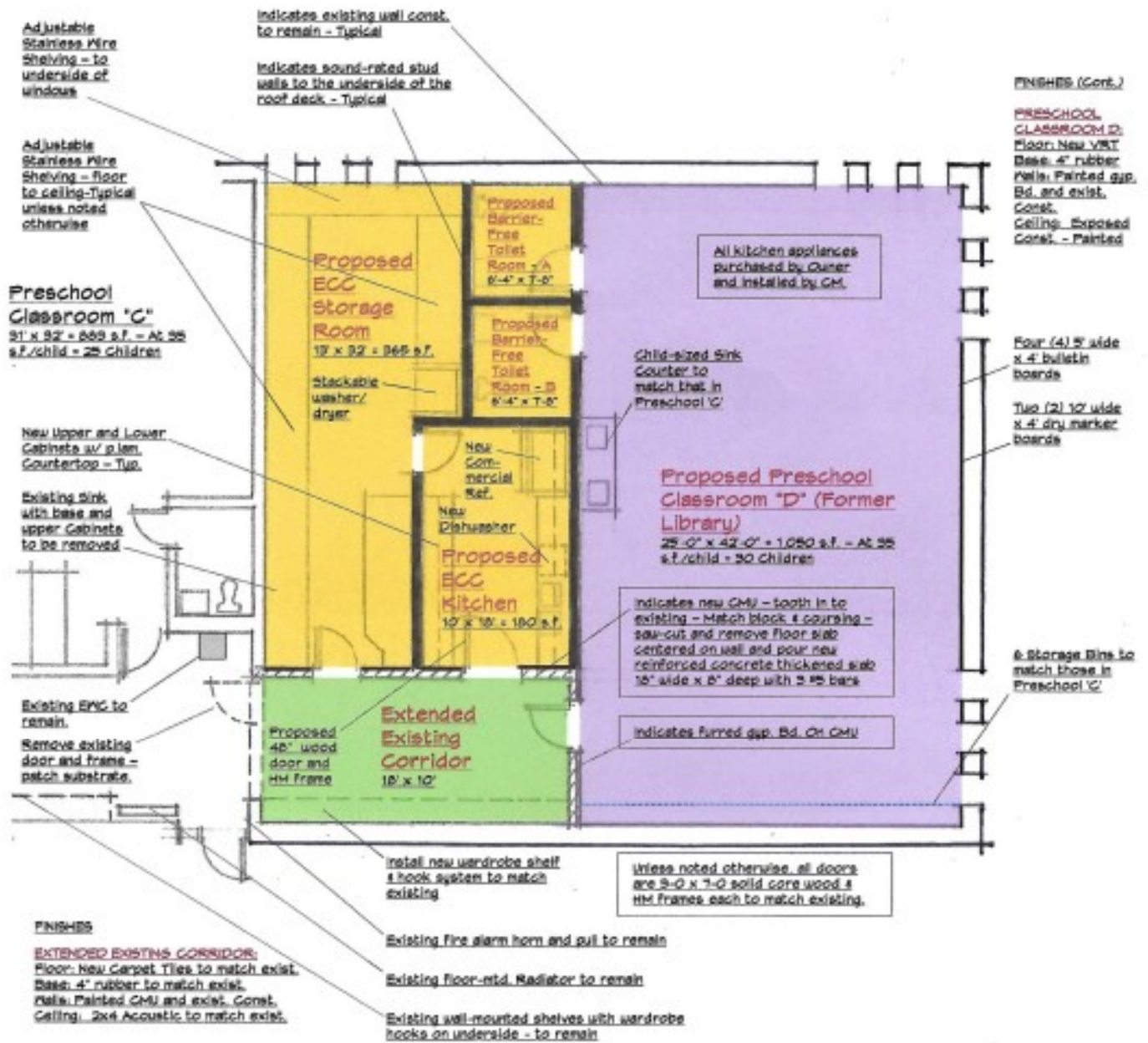
Earhart Road

New Storm Water Detention Basin



St. Paul Lutheran Church and School - Earhart Campus
2021 Feasibility Study

SITE PLAN

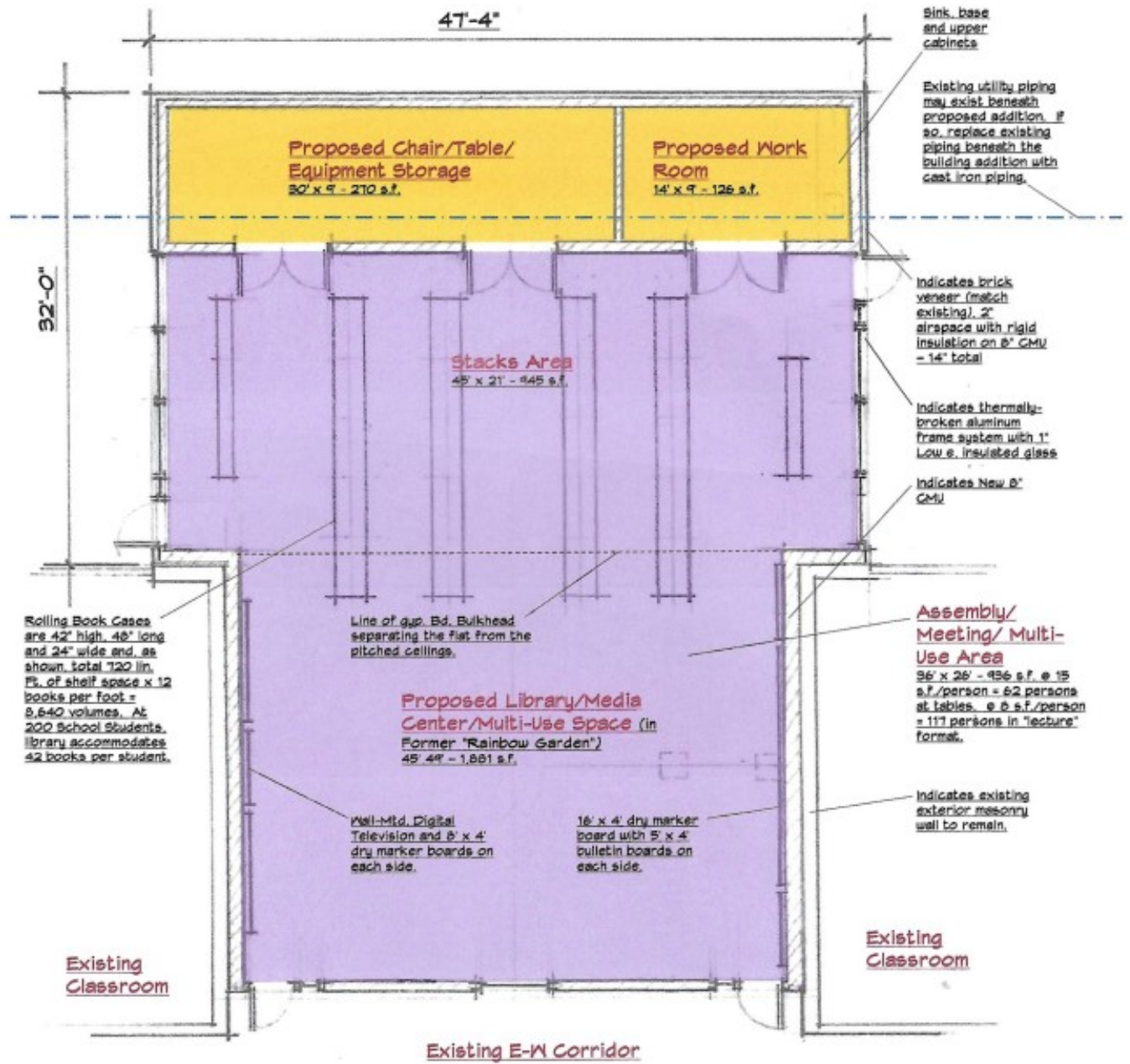


Preschool Expansion into Former Library/Media Center
Proposed Floor Plan
10/5/21

St. Paul Lutheran Church and School - Earhart Campus
2021 Feasibility Study



NEW PRESCHOOL FLOOR PLAN



Rolling Book Cases are 42" high, 48" long and 24" wide and, as shown, total 120 lin. Ft. of shelf space x 12 books per foot = 8,640 volumes. At 200 School Students, library accommodates 42 books per student.

Line of gyp. Bd. Bulkhead separating the flat from the pitched ceilings.

Proposed Library/Media Center/Multi-Use Space (in Former "Rainbow Garden")
45' 4" - 1,881 s.f.

Wall-Mtd. Digital Television and 8' x 4' dry marker boards on each side.

16' x 4' dry marker board with 8' x 4' bulletin boards on each side.

Assembly/Meeting/ Multi-Use Area
96' x 26' = 936 s.f. @ 15 s.f./person = 62 persons at tables @ 6 s.f./person = 117 persons in "lecture" format.

Indicates existing exterior masonry wall to remain.

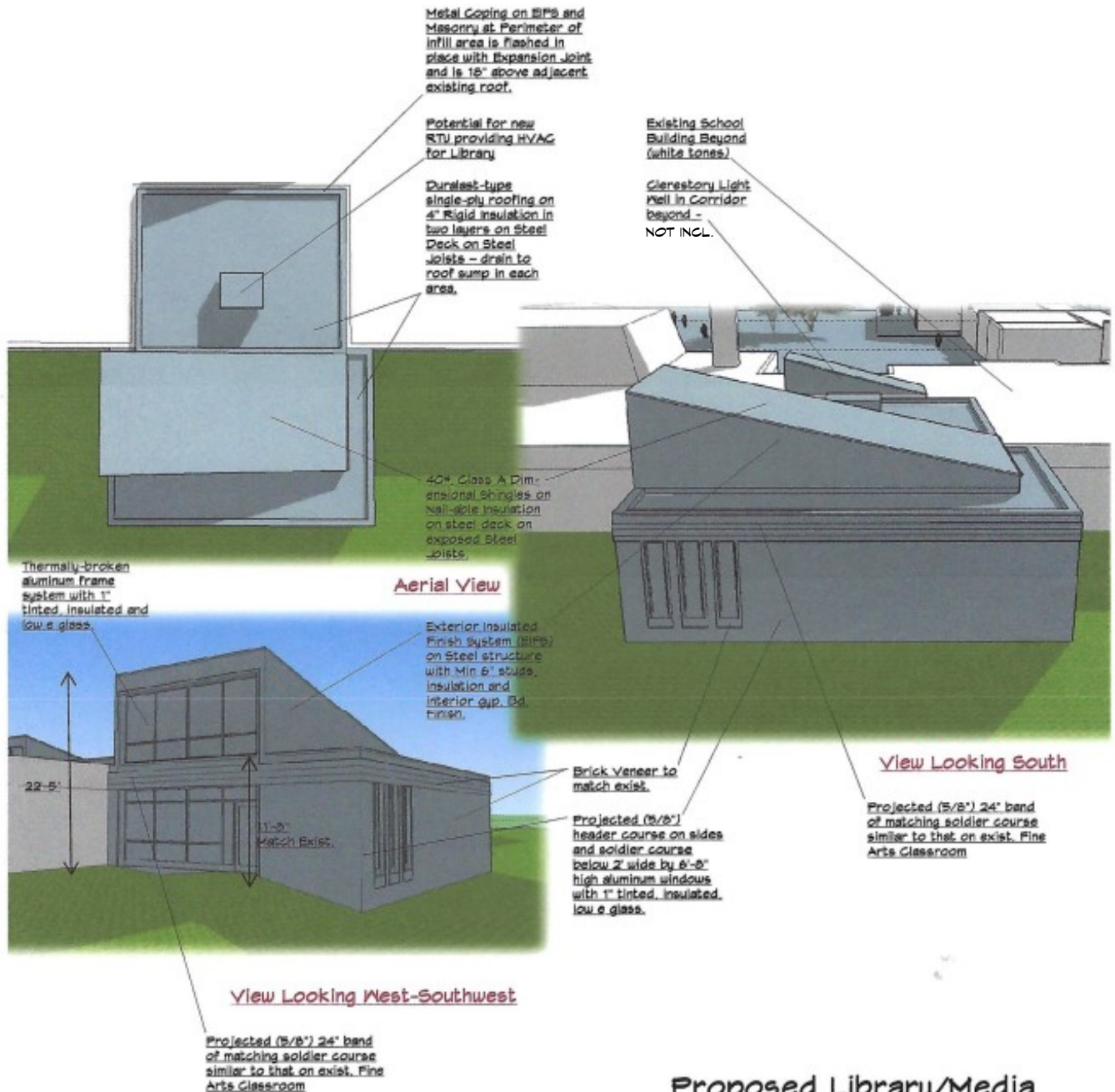
Distance from existing building to North Property Line is approximately 18'. The zoning ordinance calls for a Side Yard Setback Dimension of 5' Minimum and a total of 14'. The Proposed does not even remotely approach the required setback line.

Proposed Library/Media Center/Multi-Use Space
Floor Plan
10/5/21



St. Paul Lutheran Church and School - Earhart Campus
2021 Feasibility Study

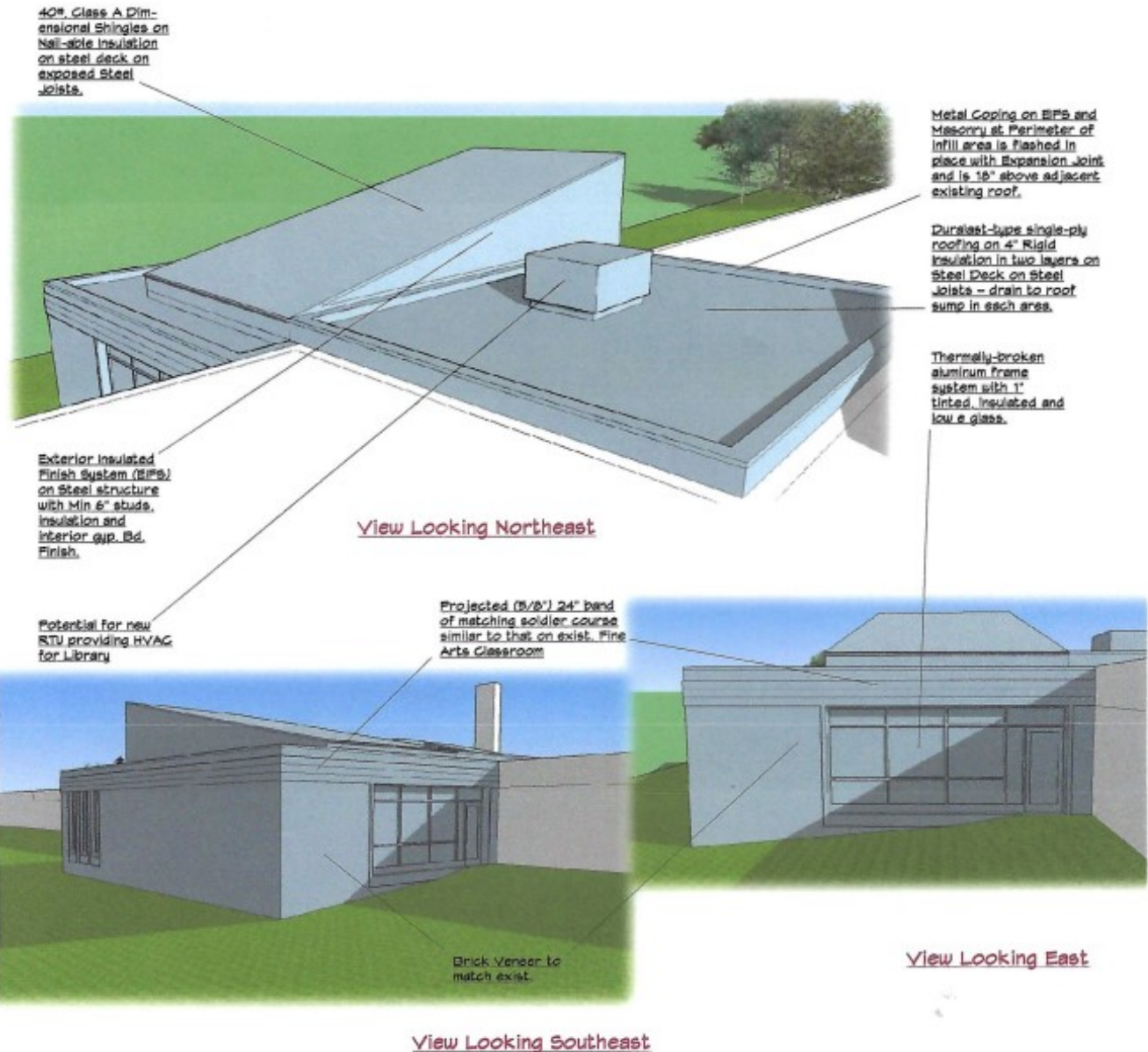
NEW LIBRARY FLOOR PLAN



Proposed Library/Media Center/Multi-Use Space
Model Screenshots
10/5/21

St. Paul Lutheran Church and School - Earhart Campus
2021 Feasibility Study

LIBRARY EXTERIOR VIEWS



Proposed Library/Media Center/Multi-Use Space
Model Screenshots
10/5/21

St. Paul Lutheran Church and School - Earhart Campus
2021 Feasibility Study

LIBRARY EXTERIOR VIEWS